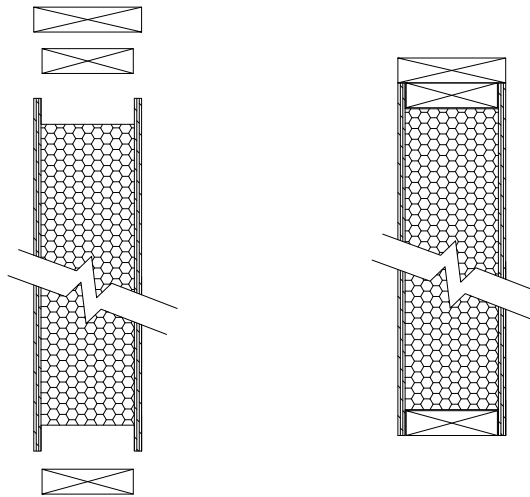


III. Wall Panel Installation

Before starting, make sure the foundation is square and level. If there are any issues, corrections need to be done ahead of time. Framing on a foundation that is not square or level will cause more corrections and panel modifications. Make sure the panels have full bearing so loads can be transferred through both skins. An EPS wall will have either a double top plate or a single double beveled top plate. The double top plate can be used with roof trusses or roof panels. The single double beveled top plate is used with roof panels only.

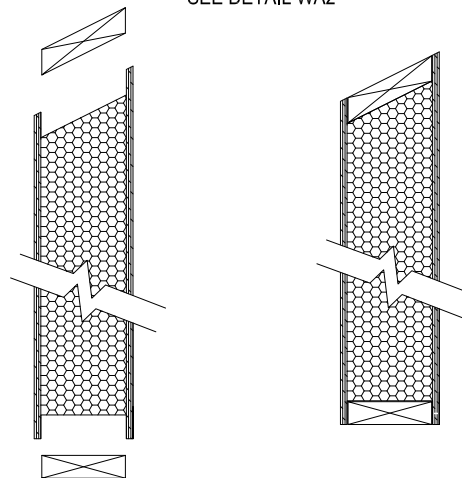
a. Double top plate:

SEE DETAIL WA1



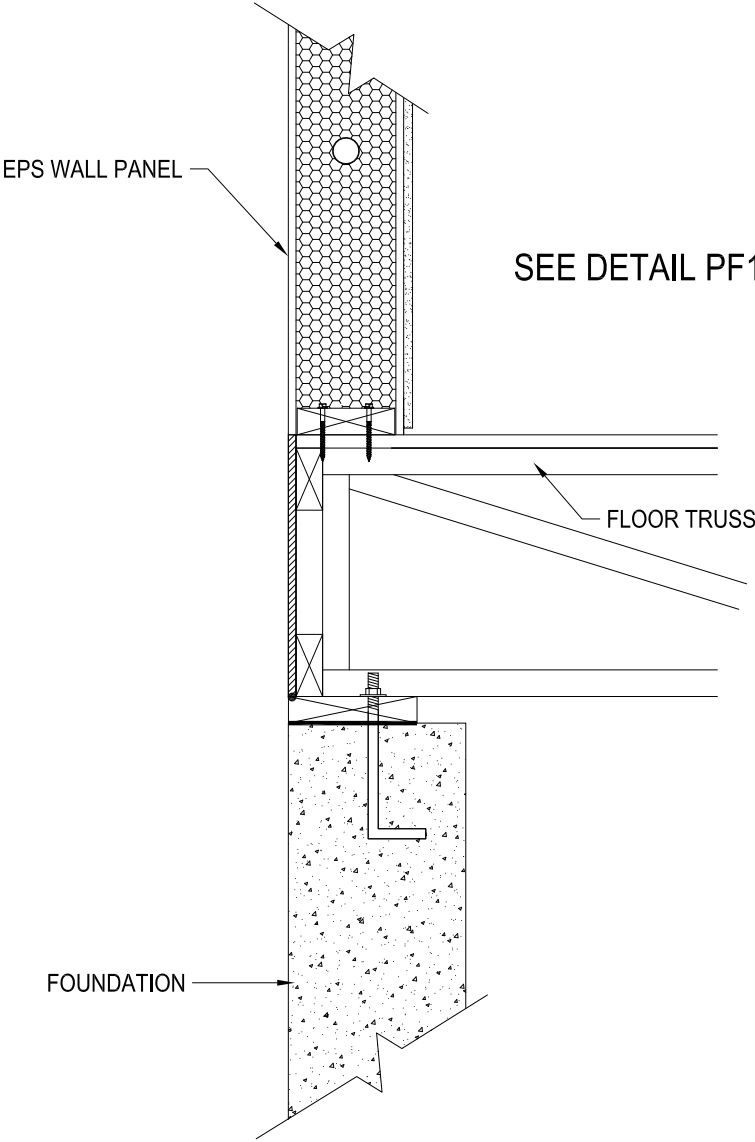
b. Double beveled plate:

SEE DETAIL WA2

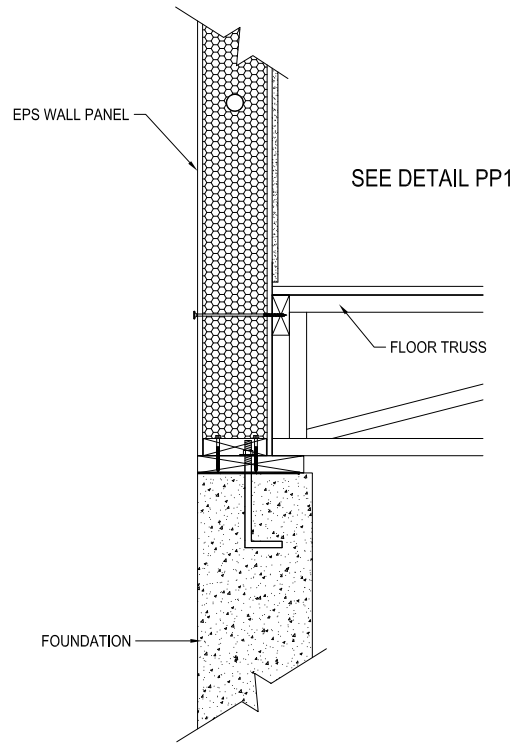


Wall panels are going to be installed to the base in one of three basic ways: On top of the subfloor, running the panels past the floor and setting on top of foundation, or directly on concrete slab. When using panels past, the foundation walls need to be a minimum of 10" thick.

c. Panels on subfloor: (Pricing Option "A")



d. Panels past: (Pricing Option "B")



e. Panels on slab:

