

PLYCO

CORPORATION
PO BOX 386 • ELKHART LAKE, WI 53020

SERIES 20 INSULATED DOORS

SERIES 20

Easy to Install

Pre-Hung

Heavy Duty

Energy Saving

*Baked on finish available
in 4 different colors*



PLYCO Series 20 Insulated Door

The Plyco 20 Series pre-hung door with universal swing feature is the one door that's right for the job — the whole job.

We have incorporated:

- Full rolled edge 24 gauge steel panel, 1 3/4" thick
- Universal Swing feature is fully reversible in the 3 1/2" thick jamb with universal threshold
- 16 gauge galvanized steel jamb
- Stainless steel hinges are standard
- Q-Lon weather stripping on jamb allows for greater leak protection

- Jamb is tooled for hinge and strike mortise, and all jamb mounting holes are counter sunk to allow smooth surface installation

- Composite lock block and deadbolt prep are standard

- Lock strike plate is adjustable

- Handicap threshold is optional

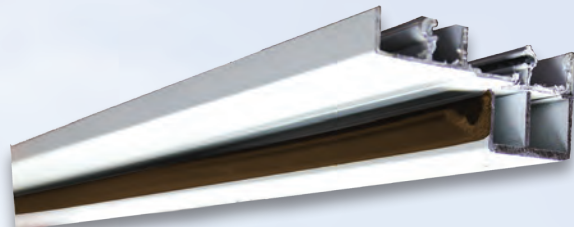
- Passes all IBC code tests

- Standard sizes are 2668, 2868, 3068, 3668, 3070, 3670, 4068 and 4070





Durable Alcryn Bulb and Fin Sweep top and bottom weather seals contact header and threshold to greatly reduce water infiltration



Optional Header-Stop for additional weather sealing



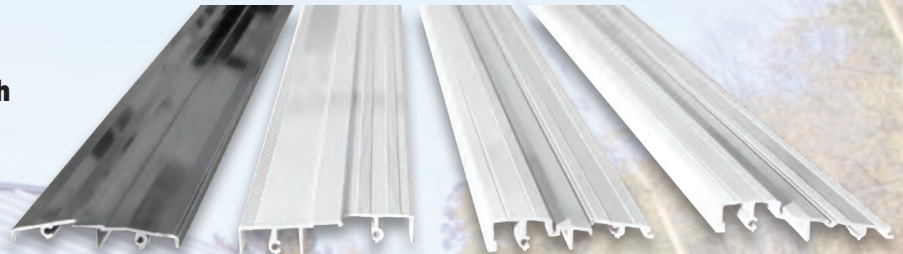
Q-Lon weather stripping increases air and water leak protection



Optional Foam-Injected Insulated Jamb

Windows:

- Are pre-installed and pre-caulked with aluminum frame
- Wide variety of window options



ADA (mill finished)

Universal

Inswing

Outswing

Four different style of thresholds available

Door options:

- Panic hardware
- Door closers
- Extra heavy duty locksets
- Security deadlocks
- Passage locksets
- Special blocking
- Master keyed locksets
- Barn door latch

Refer to price page for other lockset options



Latch plate is horizontally adjustable in and out to insure a tight fitting door. Simply loosen screws and tighten at desired position.

3068-4068-6068-8068 available in 4 colors

3068 available with cross buck and six panel embossing

Bronze

Hickory Moss

Polar White

Chocolate Brown



PLYCO Series 20 Door

SIZES	2/6 x 6/8 2/8 x 6/8 3/0 x 6/8 3/6 x 6/8 4/0 x 6/8 Dbl. 6/0 x 6/8 Dbl. 8/0 x 6/8 3/0 x 7/0 3/6 x 7/0 4/0 x 7/0 Dbl. 6/0 x 7/0 Dbl. 8/0 x 7/0
OVERALL DIMENSIONS	a) For correct out to out dimensions see Data Sheet DO-1 3/0 x 6/8 = 39 7/8" x 81 3/8" b) For Rough Opening dimensions, use dimensions (above -a) and add 1/2" to width and 3/8" to height Example: R.O. 3/0 x 6/8 = 39 7/8" + 1/2" Width x 81 3/8" + 3/8" Height = 40 3/8" x 81 3/4"
Rough Opening MULLION / ASTRAGAL	Double doors have attached astragal on the inactive panel of the pair - shipped knocked down with full header. Hinges are attached to jambs. Manual head and foot bolt concealed in the astragal. Astragal is
non-detachable HINGES	(3) 4" X 4" Stainless Steel NRP hinges are standard, Ball-Bearing stainless steel on 4/0 sizes

DOOR PANEL

THICKNESS	1 3/4"
SKIN	Smooth 24 ga. galvanized steel painted finish
EDGES	Rolled edge in aluminum core rails
BLOCKING	HDPE lock reinforcing structure, optional steel closer and panic bar blocking. Special lock blocking is available
INSULATION	Panel R-13 (u= .077)
EMBOSSING	3/0 6/8 only - Six panel style, X-Buck style
COLORS	Polar White, Bronze, Chocolate Brown and Hickory Moss
LOCK FACE PREP	Standard with 2 1/8" lockset bore, backset of 2 3/4" - non-bore optional.
DEAD BOLT	Optional face bore and edge prep for deadbolt, latchguard available as an option
SWEEP	Durable Alcryn bulb & fin sweep
LITE KITS	1-LI-2 20" x 24" Insulated 1-LA-2 20" x 24" Single glazed 1-LE-2 16" x 16" Insulated 1-LB-2 22" x 36" Insulated 1-LU-2 4" x 48" Single glazed 9-LB-2 22" x 36" Insulated w/ 9-Life Other glass sizes are available - all glass is tempered, CPSC 16CFR-1201 Cat. II. Lo-E glass is special order Mirrored, Tinted and Other Specialty Glass Available

JAMB

TYPE	PREHUNG 16. ga. galv. steel - Flush plain doors are universal swing with high performance weatherstrip
FRAME DEPTHS	3 1/2" only. Reveal is 1 7/8"
HINGE PREPS	Face mounted with concealed edges
ANCHORS	Standard frame screws, optional masonry wall clips or metal framing fasteners. Optional steel subframe
THRESHOLD	Aluminum, painted, universal, ADA threshold is available, Dedicated swing option is available

TESTING

The Series 20 door system has been tested and certified as shown.

AMMA/WDMA/CSA 101/I.S.2/A440-08 - Standard - NAFS - Certified Performance Label Available.

Air Infiltration	ASTM-E283	<0.20 CFM/ft	Passed
Water Penetration	ASTM-E331	No leakage	Passed
Physical Endurance	AAMA 920	100,000 cycles	Passed
Forced Entry Resistance	AMMA 1304	300 lb. Point Load	Passed
Thermal Performance	NFRC 100-2010	U factor = 0.24 (Flush & Embossed including frame)	
Fire Resistance Labeled	N/A		
Wind-Storm Resistance	ASTM-E330-02	Single Lock	+/-45 psf Class LC-PG45 (52x86)
(Flush Doors, up to 4070)		Deadlock added	+/-60 psf Class LC-PG60 (52x86)
(Full 22x60 Insul. Lite Kit Installed, up to 3070) Sgl. Lock or Deadbolt			+/-45 psf Class LC-PG45 (40x60)
(Full 22x60 Insul. Lite Kit Installed, up to 3070) Panic Bar - Rim Device			+/-40 psf Class LC-PG40 (40x86)
(See Texas Product Evaluation #DR-571-DR-576 & Florida FBC Product Approval #15336 Series 20EV)			



800-967-2130
www.epsbuildings.com
Locations in:
Iowa-New York - Missouri

